

PLEASE CHECK WWW.MOLEX.COM FOR LATEST PART INFORMATION

Part Number: **0510151300**
Status: **Active**
Description: 2.00mm (.079") Pitch Board-In Crimp Housing, Low Profile, 13 Circuits

Documents:

3D Model	Product Specification PS-51015-002 (PDF)
Drawing (PDF)	RoHS Certificate of Compliance (PDF)
Product Specification PS-51015-001 (PDF)	

Agency Certification

UL	E29179
----	--------

General

Product Family	Crimp Housings
Series	51015
Product Name	Board-In

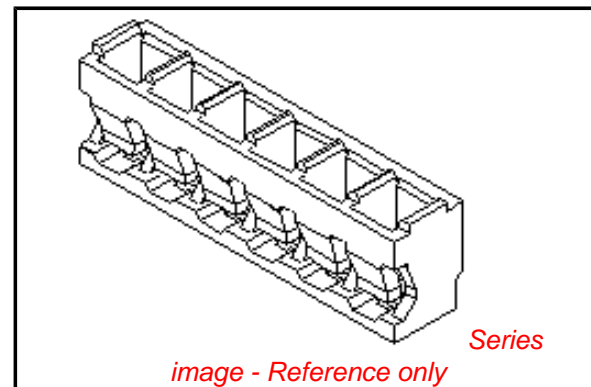
Physical

Circuits (maximum)	13
Color - Resin	Natural
Flammability	94V-0
Gender	Male
Glow-Wire Compliant	No
Material - Resin	Nylon
Number of Rows	1
Packaging Type	Bag
Panel Mount	No
Pitch - Mating Interface (in)	0.079 In
Pitch - Mating Interface (mm)	2.00 mm
Stackable	No
Temperature Range - Operating	-40°C to +105°C

Material Info

Reference - Drawing Numbers

Product Specification	PS-51015-001, PS-51015-002, RPS-51015-001, RPS-51015-003, RPS-51015-004, RPS-51015-005, RPS-51015-006
Sales Drawing	SD-51015-**00



EU RoHS

**ELV and RoHS
Compliant**
REACH SVHC
 Not Reviewed
**Halogen-Free
Status**

China RoHS



**Need more information on product
environmental compliance?**

Email productcompliance@molex.com
 For a multiple part number RoHS Certificate of
 Compliance, [click here](#)

Please visit the [Contact Us](#) section for any
 non-product compliance questions.

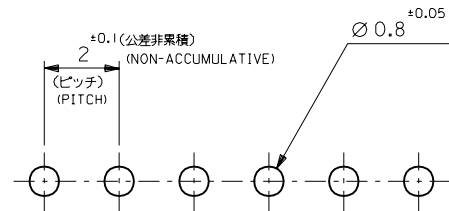
Search Parts in this Series

51015Series

Use With

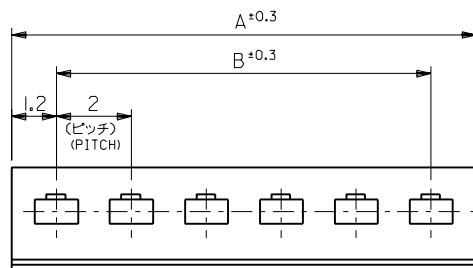
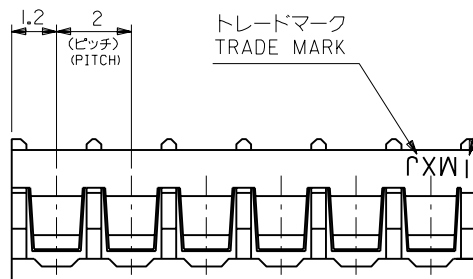
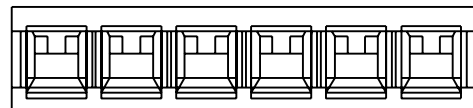
50034

PLEASE CHECK WWW.MOLEX.COM FOR LATEST PART INFORMATION

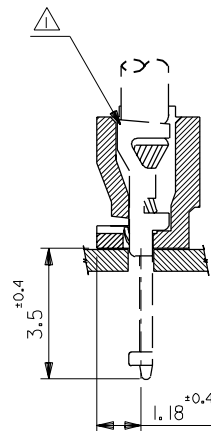
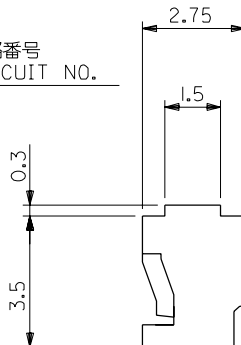


基板取付穴推奨寸法

(基板厚: $t=1\sim 1.6$ mm)
 RECOMMENDED PC BOARD
 HOLE DIMENSION
 (THICKNESS: $t=1\sim 1.6$ mm)



回路番号
CIRCUIT NO.



注記
NOTE

△ 適合ターミナル: 50034-8*00
 APPLICABLE TERMINAL: 50034-8*00

28	30.4	51015-1500	15
26	28.4	↑ -1400	14
24	26.4	-1300	13
22	24.4	-1200	12
20	22.4	-1100	11
18	20.4	-1000	10
16	18.4	-0900	9
14	16.4	-0800	8
12	14.4	-0700	7
10	12.4	-0600	6
8	10.4	-0500	5
6	8.4	-0400	4
4	6.4	↓ -0300	3
2	4.4	51015-0200	2
B	A	ENG.NO.	種数 NO. OF CKT

角度 ANGLE	$\pm 3^\circ$
30以上 OVER	± 0.3
10以上 30未満 UNDER	± 0.25
10未満 UNDER	± 0.2
一般公差 GENERAL TOLERANCES	

記号 LTR	変更内容 REVISION RECORD	DR. CHK.	日付 DATE
B	再作図 REDRAWN	H.J. M.F.	'96/05/20
	LC703101		

材料 MATERIAL	ナイロン66, UL94V-0 NYLON66, UL94V-0
仕上げ FINISH	—
適用電線範囲 WIRE RANGE	—
被覆外径 INS. RANGE	—
DRAWN BY '96/05/28	CHK'D BY '96/05/28
H.I.IJIMA	M.FUKUSHIMA
APP'D BY '96/05/28	尺度 SCALE 8 : 1
M.ENOMOTO	

molex MOLEX-JAPAN CO.,LTD. 日本モレックス株式会社	
REVISE ONLY ON CAD SYSTEM	
TITLE 名称 2.0 BOARD IN CONN. HSG.	
DWG. NO. SD-51015-**-00	REV B